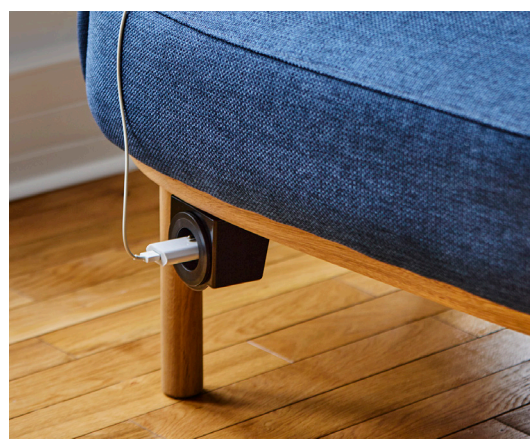
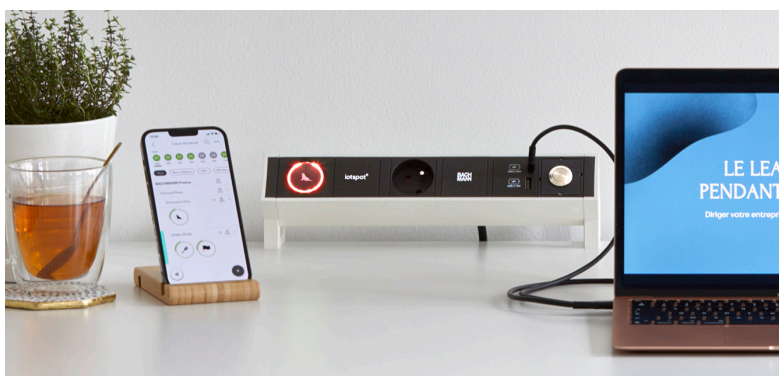


360° WORKSPACE^s

01



Empower new ways of working for
dynamic and flexible environments

**BACH
MANN**
We power your life.

TABLE OF CONTENTS



We returned to the post-pandemic office with new expectations. Rather than the habitual place to work, the office has become a space to connect, for deep focus or activity based working. This requires new types of environment, with agile infrastructure.

The need for immediate access to versatile power and data, and ergonomic design puts new pressures on existing infrastructure. We developed our office solutions with retrofitting in mind, to take the strain out of creating the office of today.

04

06

08

Enviroments in context

- Multiple environments shape the workplace
- Multimodal environments
- Different zones

Desk sharing

- STEP
- ZG1 Monitor Arm
- ZGX Crossbar
- USB-A/C Charger
- iotspot
- DESK 2

Touch down space

- Mini Port Replicator
- ZG1 Monitor Arm
- Aircharge
- KAPSA
- LOOP IN

10

Agile spaces/training rooms

- Independent Wokplace
- PRIMO 2
- Independent Monitor
- CYCLE

12

Huddle rooms

- Custom Modules
- MOV:E
- OCHNO
- CONI

14

Meeting rooms

- 60 W USB-C Charger
- POWER FRAME COVER
- Cable snake®
- iotspot
- TOP FRAME

16

Lounge/welcome areas

- PIX
- PIX HOLDER
- MOV:E
- KAPSA
- CYCLE

18

Silent booth

- MINI PIX
- POWER FRAME
- Independent Workplace
- iotspot

20

Kitchen/break out areas

- TWIST
- USB-A&C Custom Module Charger
- CASIA 2

22

Home office

- USB-C Charger
- ZG1 Monitor Arm
- Mini Port Replicator
- DESK 1
- Automatic wrap

24

Product list

ENVIRONMENTS IN CONTEXT

Identifying new working zones

Multiple environments shape the workplace

While the office of the past was defined by its open-plan space and formal meeting rooms, the modern workplace is shaped by multiple environments. These dynamic spaces – from huddle rooms to private booths and casual lounges – support diverse working styles that lie on a spectrum between deep concentration and collaboration.

Digital environments are playing an evermore significant role in the set up of these spaces, with advanced technology fostering seamless communication between remote and in-office teams worldwide.



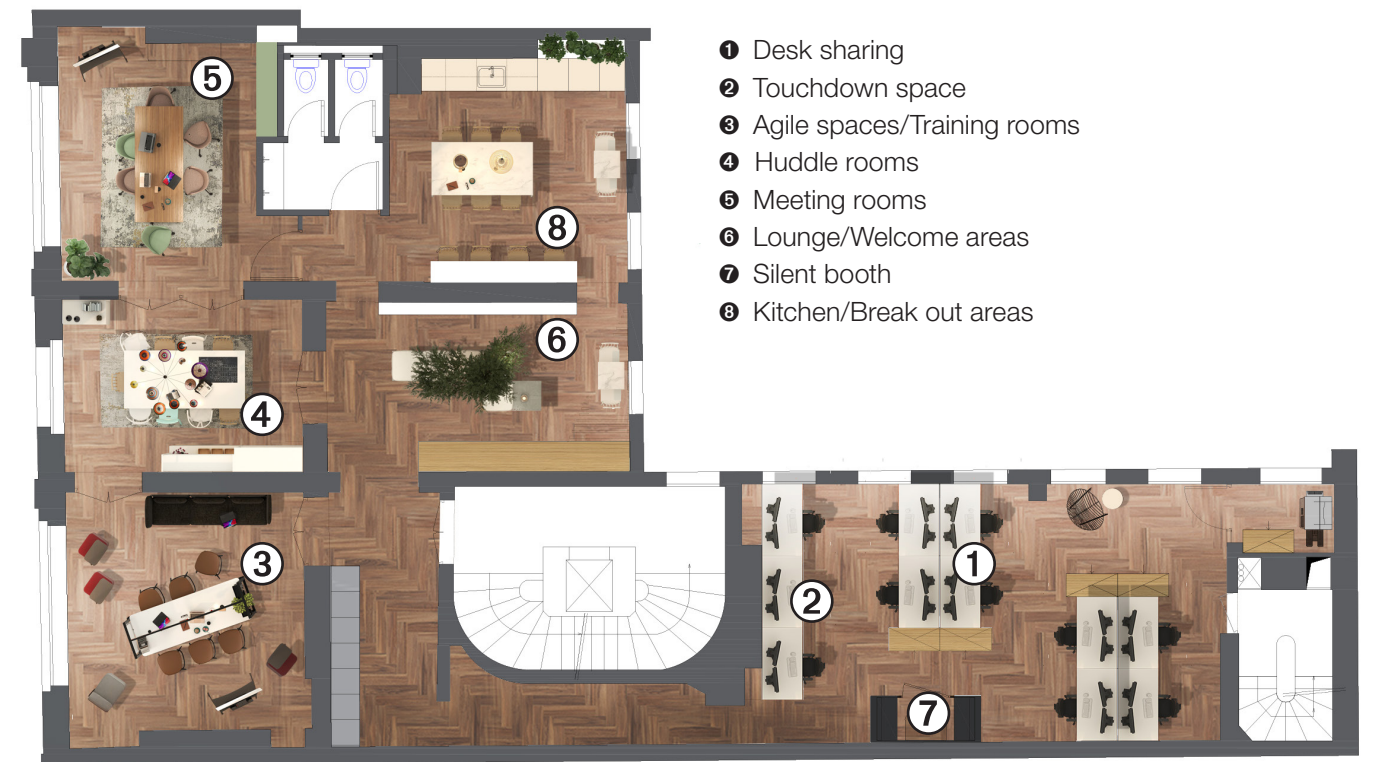
Multimodal Environments

Multimodal environments prioritise flexibility, collaboration and wellbeing. By offering diverse work settings with innovative technology, these environments aim to create engaging and inspiring workplaces that enhance productivity and creativity, and ultimately lead to job satisfaction.

Fluidity in the technological set up of these spaces adds a further layer of freedom to deliver more inclusive working preferences.

Different zones

- ❶ Desk sharing
- ❷ Touchdown space
- ❸ Agile spaces/Training rooms
- ❹ Huddle rooms
- ❺ Meeting rooms
- ❻ Lounge/Welcome areas
- ❼ Silent booth
- ❽ Kitchen/Break out areas



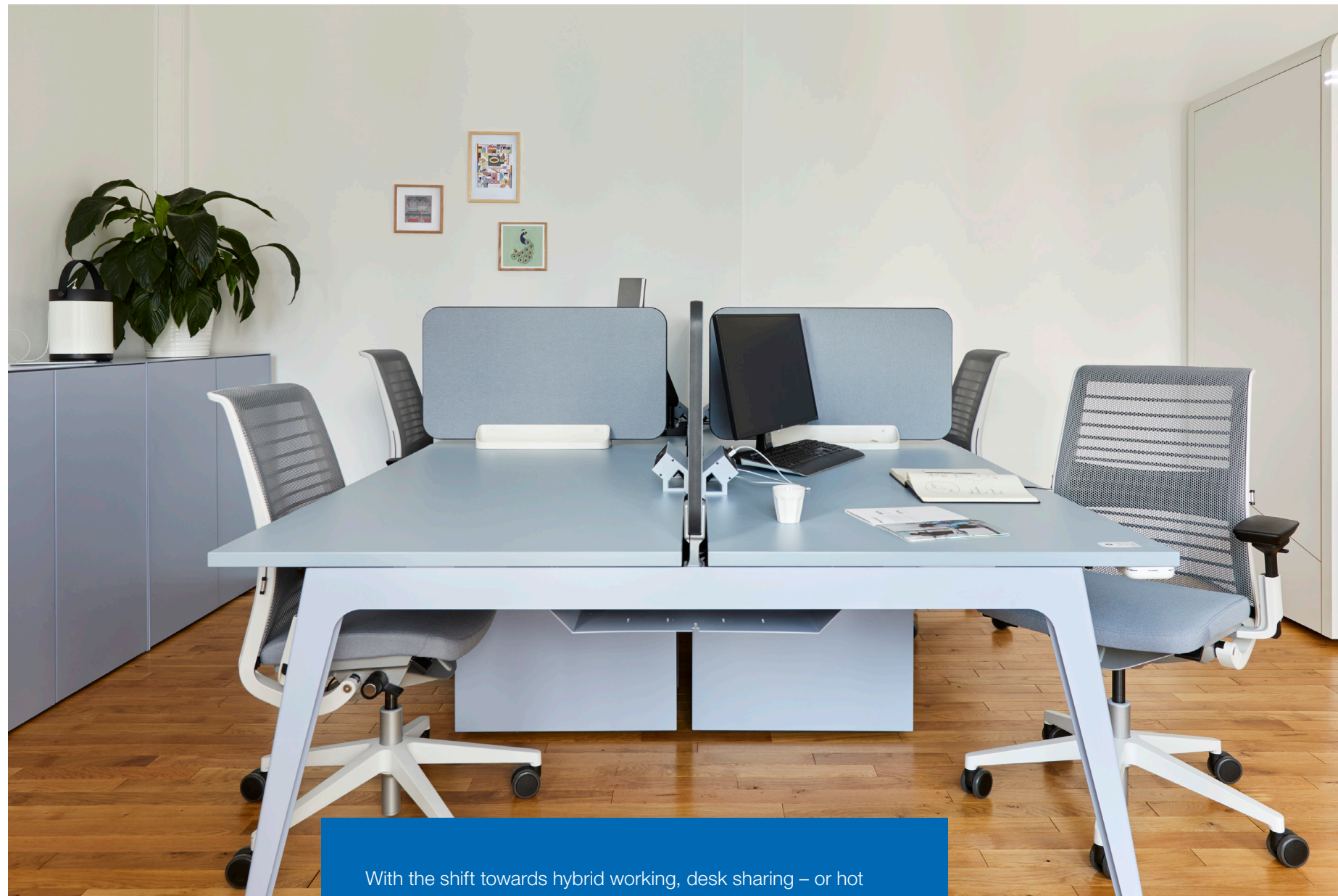
The key to creating a workplace ecosystem is to find the right mix and balance.

While autonomy is one element of a healthy workplace ecosystem, collaboration is not to be neglected. To keep productivity high, individuals and teams need to be considered. As such, the right mix and balance of working spaces is key. With the rise of

distributed teams and virtual capabilities, organizations need to provide a balanced collection of working spaces. In doing so, the workplace ecosystem will provide workers with a strong framework for how they can embrace a hybrid future of work.

DESK SHARING

Embrace the freedom of unassigned seating

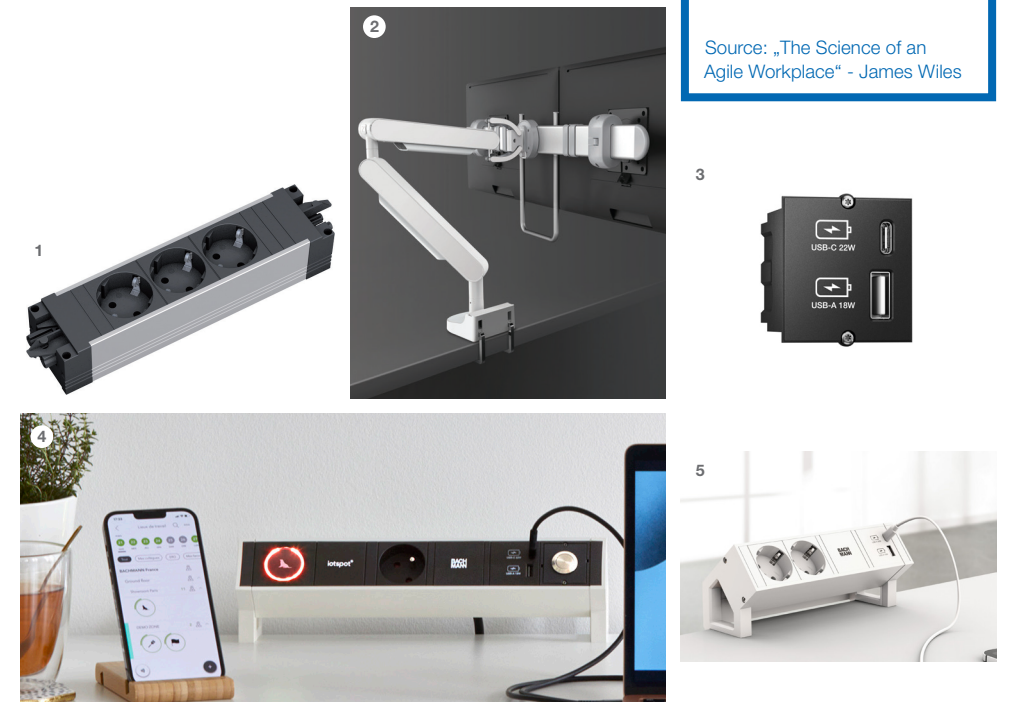


With the shift towards hybrid working, desk sharing – or hot desking – has become standard practice. But the smooth-running of a shared environment is dependent on the shareability of its tools. We developed our booking system to help people find their ideal workspot for the day, an adjustable monitor arm to create a comfortable environment for everyone, and adaptable charging stations that leave nobody without the power they need.

50%

of office seats are always unoccupied at any one point in time during an average workday.

Source: „The Science of an Agile Workplace“ - James Wiles



- 1 More permanent power connections can be concealed with our under-table **STEP** system. Fitted with power in and out installation connectors, regulation-conforming daisy chaining is possible.
- 2 Our **ZG1 Monitor Arm** with **ZGX crossbar** offers a wellbeing boost. Designed to support two monitors, its position can be easily adjusted to suit personal preferences.
- 3 Our **USB-C chargers** are fully Power Delivery (PD) conform and are offering the perfect charging current and power to PD mobile devices, such as smartphones, tablets and laptops.
- 4 Being able to optimise space capacity, monitor resources and adapt hybrid work along with business needs is essential. Bachmann offers a simple solution with **iospot**, a Smart Workplace Platform to support hybrid working for organisations and workers
- 5 In desk sharing environments it is crucial to have easy and fast access to power and data connectivity. On-desk solutions, like our **DESK 2** offer easy accessibility.

TOUCH DOWN SPACE

Fleeting workspaces with efficient technology

80%

of workers would be more loyal to their employers if they offered flexible work options.

Source: Flexjob survey

Touchdown areas are a key component of any agile workspace – they are used by working nomads that are looking for a workplace from a couple of minutes to a few hours. In these short-term workspaces, it's particularly important to offer a fast and simple setup with easy access to power and charging points, flexible monitor options and wireless connectivity.



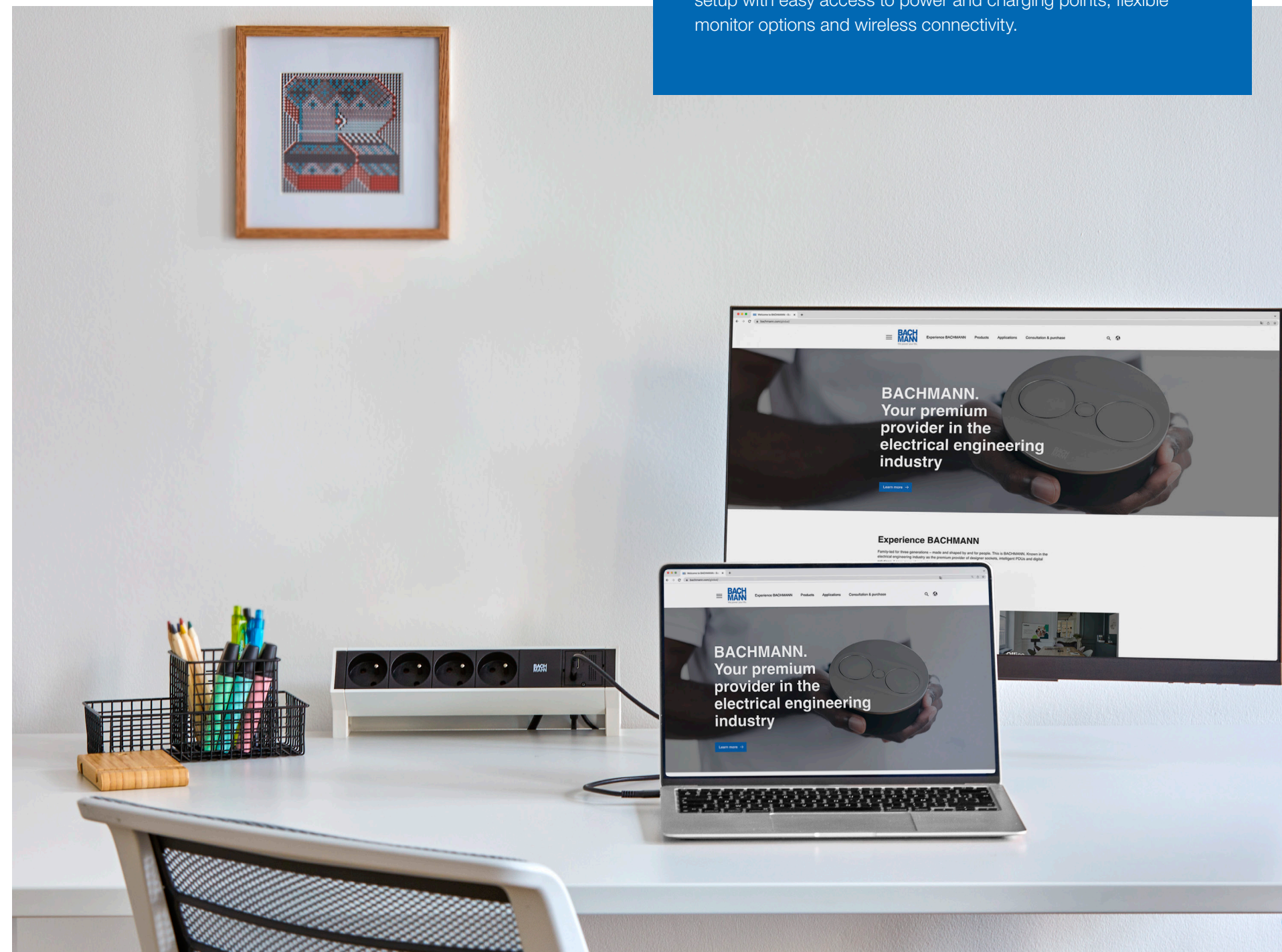
1 Internet connection, power supply, screen connection – the Custom Module **Mini Port Replicator** bundles everything a laptop needs into a single USB-C connection. Ready to get integrated in one of our connection panel, like the DESK2.

2 Our ergonomic **ZG1 Monitor Arm** can support screens of up to 17-34 inches and 11 kg, including curved monitors.

4 **KAPSA** is a real space saver with its flushed, slick and stylish integration to any top surface. The flip-flap lid provides protection against external influences, is available in several versions and can get exchanged easily.

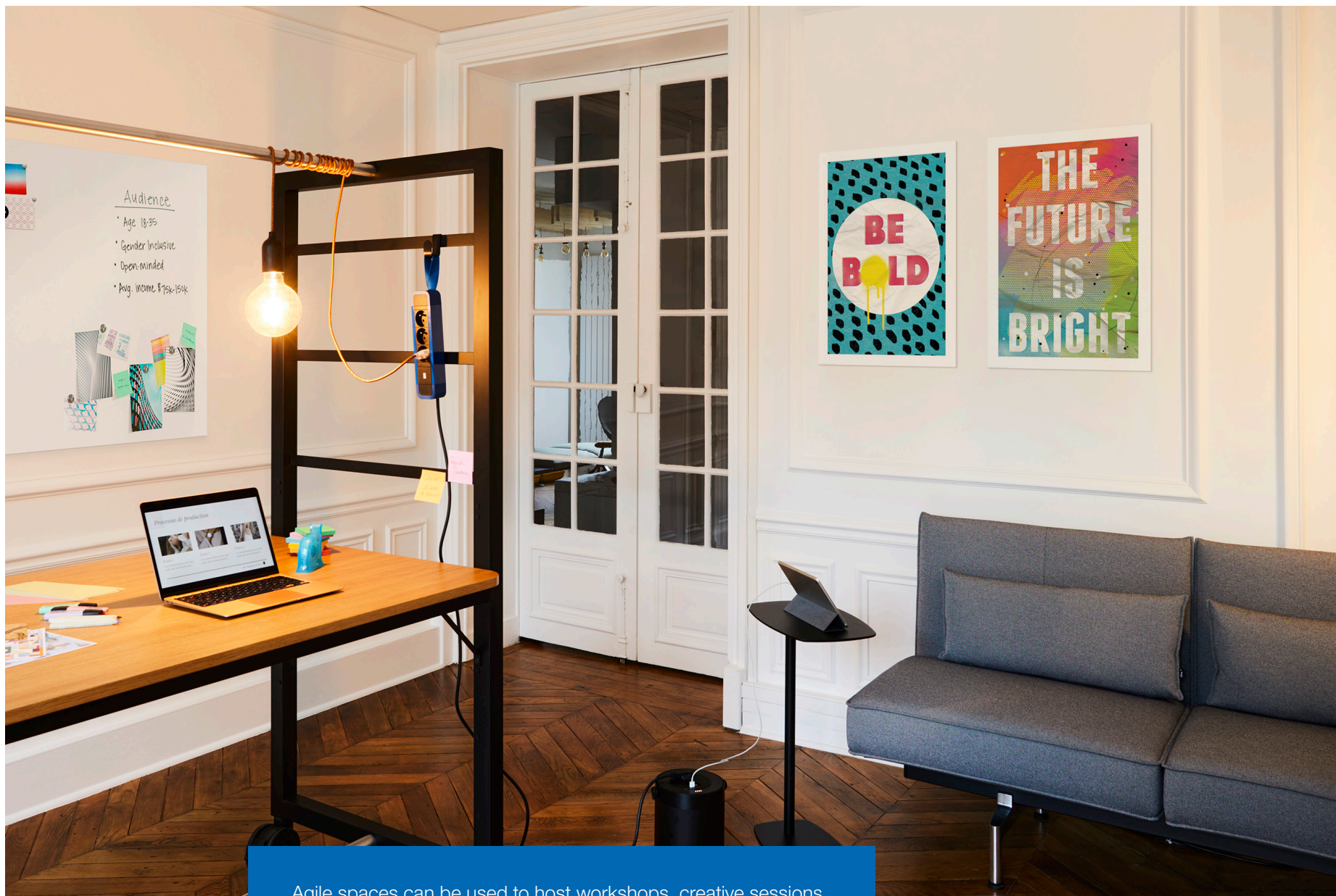
3 Our wireless Qi charger **Aircharge** features a fast-charging function that will power up your smartphone in less time.

5 **LOOP IN:** An all-in-one power and cable passthrough for data and media cables.



AGILE SPACES/ TRAINING ROOMS

Flexible spaces for collaboration

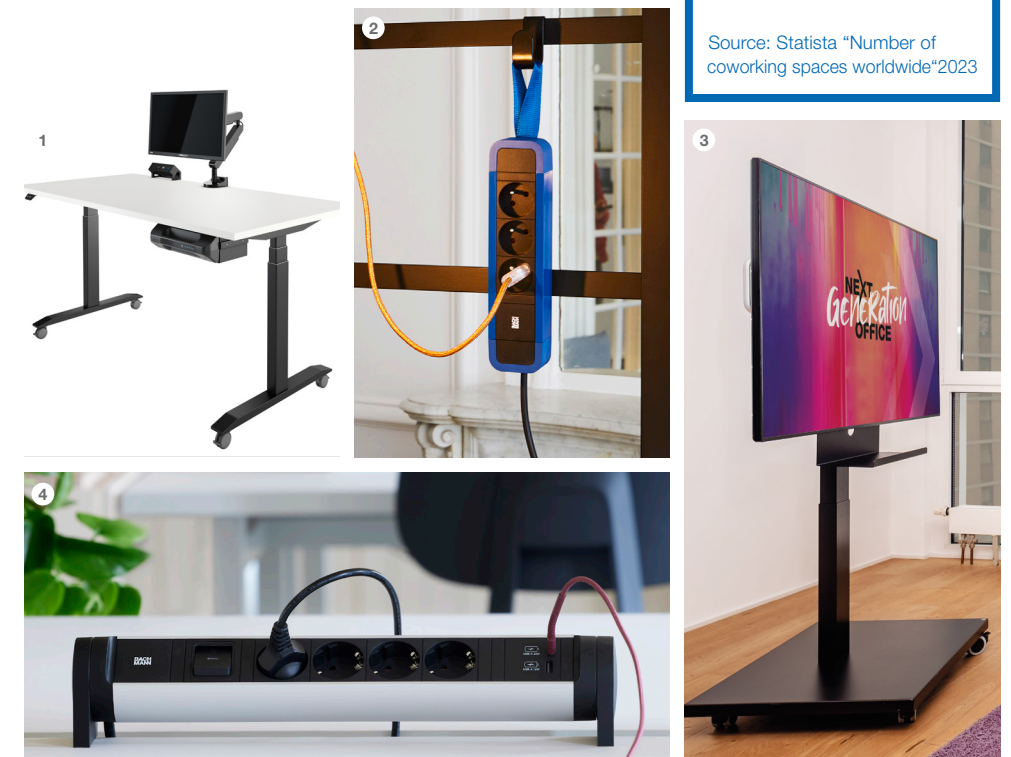


Agile spaces can be used to host workshops, creative sessions and team meetings. But to help these spaces to be as flexible as they need to be, you need special technical solutions. Adjustable sit-stand desks, battery powered monitors, mobile charging stations and power strips that can be easily integrated with soft furnishings are all part of our offering.

69%

of office workers say they are more productive when they can work in a variety of settings during the workday.

Source: Statista "Number of coworking spaces worldwide" 2023



1 Our **Independent Workplace** kit helps desks and meeting tables to become agile, with battery powering for laptops, tablets, smartphones and external monitors as well as height-adjustment.

2 **PRIMO 2** is a brand new socket strip. The contemporary design, which comes in blue, black and green, features an optional hanging loop for mobile furniture solutions.

3 Thanks to its integrated battery, our **Independent Monitor** can be used anywhere it's needed, without the need for access to mains power.

4 **CYCLE** is not only environmental friendly due to a plastic compound using corn oil, but offers the possibility to change the product application during its lifetime. The end caps are exchangeable so you can transfer the product from a fixed one, to a mobile one, or even to one offering a hanging loop.

HUDDLE ROOMS

Small but powerful

11%

of meetings are productive. Smaller collaboration spaces engage for more outcomes and productivity!

Source: Zippia



1 We developed our **Custom Modules** to offer a range of flexible data and media connections. With our modular options you can update your connection panel whenever needed.



2 With **MOV:E** the name says it all. This XXL energy store, offering **USB-A, USB-C**, or even a **230 V German type socket**, brings power exactly where it is needed.



3 Switch between the office conference system and your own device with our **OCHNO** Power Conference. Offering 4 USB-C connectors for content sharing and charging, and being compatible with all popular collaboration tools like Microsoft Teams, Zoom and Webex, Ochno raises the meeting quality to a whole new level.

Huddle rooms are the new meeting rooms. The difference: huddle spaces have limited capacity and are set up with the latest technology to support hybrid meetings. There are some key tools to have in your arsenal for seamless connectivity between remote and face-to-face members of the meeting, from effortless conferencing systems to high-performance media cables.

4 Functional, beautiful and reliable, our **CONI** concealed power strip is one of our best-loved products for a reason. The mechanism and lid conceal your personalised power strip within your furniture, creating a seamless surface when closed.

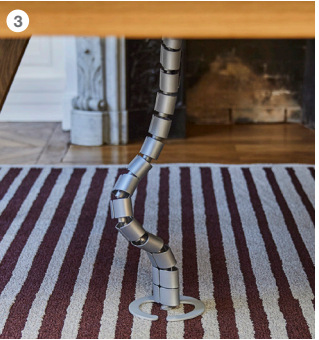
MEETING ROOMS

A quiet collaborative space to provide privacy and confidentiality



In addition to being welcoming and comfortable, meeting rooms need to be equipped with hassle-free technology. Agile booking systems, safe and tidy cable management, and access to power where and when you need it are non negotiable.

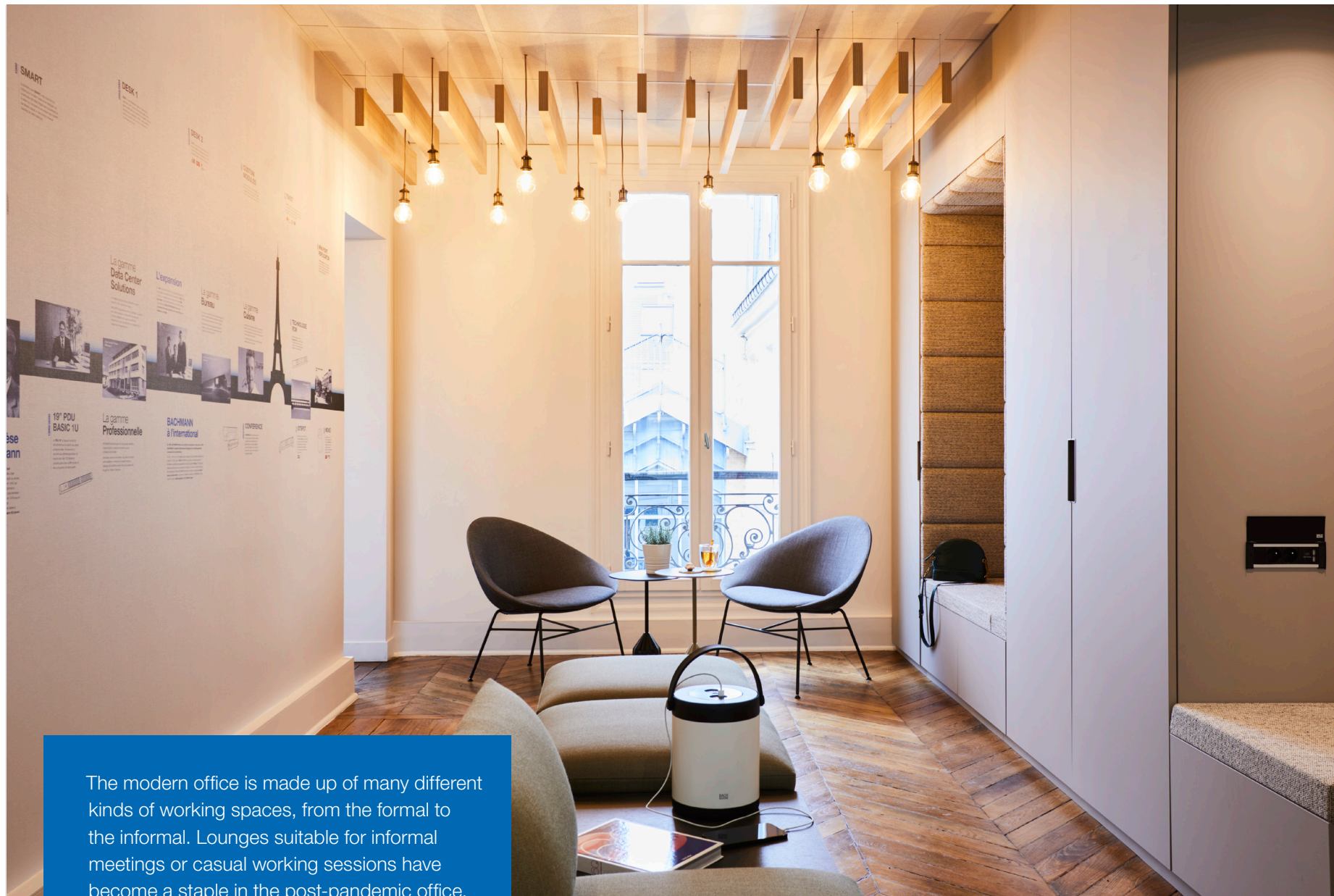
58%
of employees report that their meetings last over 30 min.
Source: Zippia



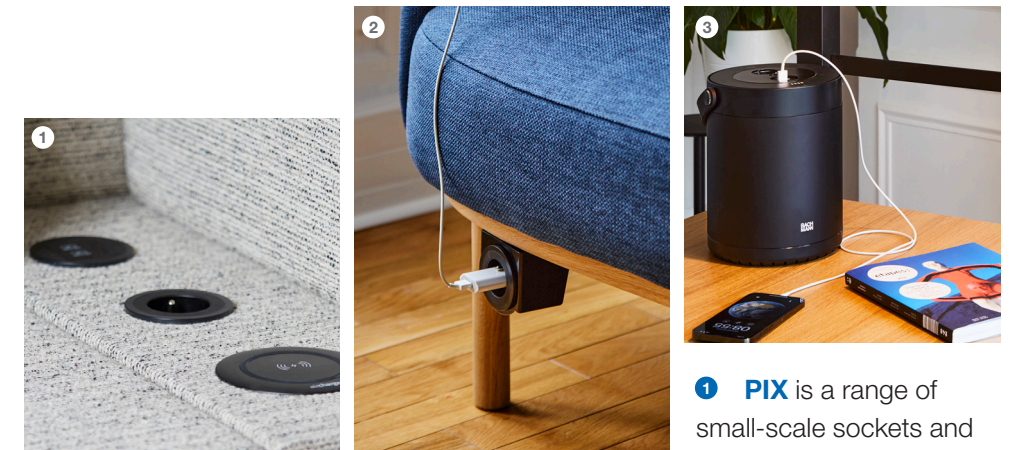
- 1** Our **60 W USB-C Charger** provides enough power to charge laptops as well as smaller devices.
- 2** You can hide unused sockets with our **POWER FRAME COVER**. When opened, the cover lies flat against the surface to allow easy access from both sides of the meeting table.
- 3** **Cable snake®**
Our system Cable Snake® offers a clean and safe cable routing upon the floor and up to the desk. Choose out of the various versions and colors the one with the best match to your furniture.
- 4** Our **iotspot** smart workplace platform allows you to easily find and book a meeting room via App, webportal or Outlook, ensuring these valuable spaces are used as efficiently as possible.
- 5** The frameless **TOP FRAME** is our most elegant solution to add connectivity to high-end meeting tables.

LOUNGE/ WELCOME AREAS

A place to greet or take a pause



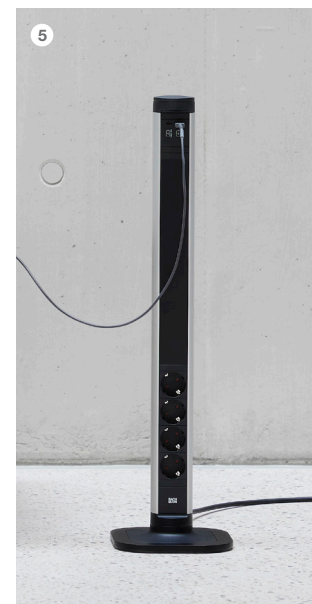
The modern office is made up of many different kinds of working spaces, from the formal to the informal. Lounges suitable for informal meetings or casual working sessions have become a staple in the post-pandemic office. Lounges and receptions frequently take cues from the home, hospitality and wellness spaces, and their homely and inviting atmosphere demands power solutions to match.



34%

of workers
prefer wor-
king from
lounge areas.

Source: Gebesa



1 **PIX** is a range of small-scale sockets and connection units that can bring discreet power to lounge and reception areas where fewer options are required. The round unit is available with a swivel mounted cover.

2 Our **PIX HOLDER** allows you to securely mount up to two Pix units to sofas and soft seating areas.

3 Charge your phone or laptop even where there is no mains connection with our **MOV:E** portable power supply. The unit, which has a 230 Wh lithium-ion battery, can power multiple laptops and charge smartphones at the same time.

4 Our **KAPSA** power strip is designed to be integrated into desks, cabinets and partition walls. Its lid hides the sockets when not in use and is available in a range of finishes to match the design of your space.

5 **CYCLE** Pole is a free-standing power pole, bringing power and USB charging in an elegant and flexible way in every lounge.

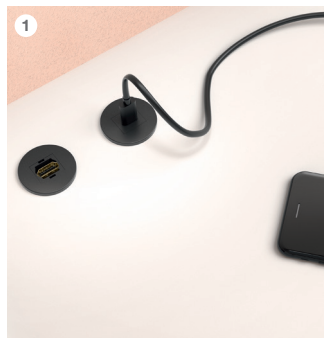
SILENT BOOTH

Focused space within busy offices

85%

of the workers today say they have difficulty concentrating.

Source: Steelcase and Microsoft, 2017



1 MINI PIX is our power solution with the smallest footprint yet. The 35 mm port can be inserted into any surface to offer a single power point. The Mini Pix is compatible with all of our Keystone Modules, including USB-A and -C sockets.



2 POWER FRAME is an ideal solution for spaces short on space. Easily accessible connections can be mounted into the desktop or installed into the silent booth partition walls to save space.



3 With our **Independent Workplace** system kit you can create a private booth even without a mains power supply. Our battery systems offer charging solutions for mobile devices and integrated lighting, allowing you to create a truly independent space anywhere in your office.



4 With our **iotspot** presence sensors booth occupation gets detected immediately. The occupancy status will be shown in realtime within the App, the webportal, in Outlook and on the illuminated iotspot module. It's a real timesaver when it comes to finding the right place to work.

Silent booths offer a retreat from the open-plan office for confidential meetings, concentrated working or phone calls. Streamlined appliances maximise these small spaces and help to keep them clutter-free. You don't need all the power points of a typical desk, so think about single power points for phone, tablet and laptop charging, and about solutions that hide away access when not needed.



KITCHEN/ BREAK OUT AREAS

Informal and social spaces are where ideas collide and emerge



Simple power adjustments can improve the versatility of kitchen and break-out areas, and reduce unnecessary meeting room use. In areas with limited space, consider vertical, concealed, or wireless power points that offer flexibility and instant connectivity. Quick and easy access to power supports the need for spontaneous collaboration.

91%

of employees say it is important to have a space where they can recharge and re-energise.

Source: Steelcase Research



1 TWIST is a perfect compact power solution for kitchens short on worktop space, providing plug sockets and optional USB-A and USB-C charging ports. After use, simply rotate the cover to conceal the outlets.

2 We expect to be able to use our mobile devices everywhere, so make charging possibilities a reality everywhere too with our integrated **USB Chargers**.

3 Our **CASIA 2** power strip can be installed horizontally or vertically. The chamfered edges make it ideal for vertical mounting in disused corners. The unit can be tailored to include a USB charging point alongside standard power sockets.

4 ELEVATOR is ideal for integrating power and data connections in tiny spaces. Simply push to raise or lower the power strip, which is installed below your worksurface.

HOME OFFICE

When work happens even at home

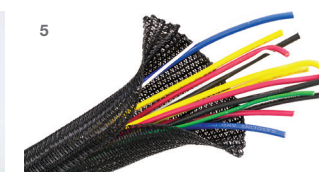
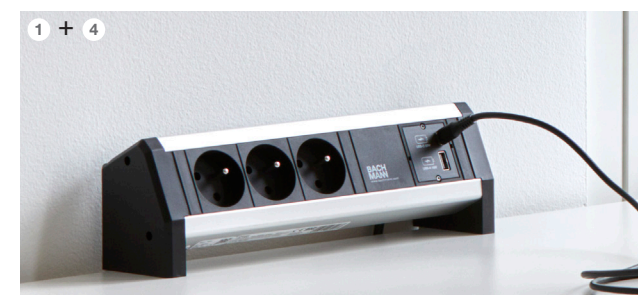


Hybrid and remote working are the new standard, with most people now used to working at least some days each week from home. This new-found flexibility is a huge perk and while it's likely everyone has a table and desk at home, there's more to a well-equipped office. Ergonomic support, safe cable management and convenient power supply are all vital for a comfortable and healthy home-working set-up.

98%

of workers want to work remote at least some of the time

Source: Forbes



- 1 Our smartphones come everywhere with us, so you'll want to be able to charge it quickly and effectively in your home office. Our **USB-C Charger** is the perfect solution.
- 2 Ergonomic design is crucial for proper posture. Our adjustable **ZG1 Monitor Arm** allows you to tailor the position of your screen to your needs. It also helps you keep a clutter-free desk thanks to a concealed cable channel in the arm.
- 3 Our **Mini Port Replicator** reduces the number of cables needed to get your laptop up and running – just plug in your USB-C connector. Part of our Custom Module series, the Mini Port Replicator is compatible with our Desk2, Pix, Power Frame and Coni Duo.
- 4 Our modular **DESK 1** power strip allows you to curate the data, media and power right you need in one place. The unit can be easily clamped to the edge of a tabletop to make plugging and unplugging even easier.
- 5 **Automatic wrap:** Neat cable management is beneficial from a security as well as design perspective because it helps prevent trip hazards.

PRODUCT LIST



Aircharge
Touchdown space **P. 8**



Cable snake®
Meeting rooms **P. 15**



CASIA 2
Kitchen /
Break out areas **P. 21**



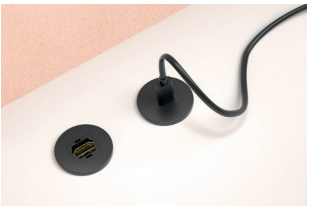
CONI
Huddle rooms **P. 13**



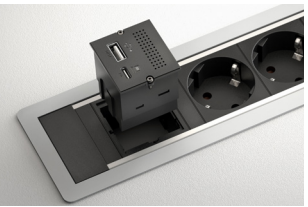
KAPSA
Touchdown space **P. 8**
Lounge /
Welcome area **P. 17**



LOOP IN
Touchdown Space **P. 8**



MINI PIX
Silent Booth **P. 18**



Mini Port Replicator
Touchdown Space **P. 8**
Home office **P. 23**



Custom Modul
Huddle rooms **P. 13**



CYCLE
Agile Spaces /
Training rooms **P. 11**
Lounge /
Welcome area **P. 17**



DESK 1
Home office **P. 23**



DESK 2
Desk sharing **P. 7**



MOV:E
Huddle rooms **P. 13**
Lounge /
Welcome area **P. 17**



OCHNO
Huddle rooms **P. 13**



PIX
Lounge /
Welcome area **P. 17**



PIX HOLDER
Lounge /
Welcome area **P. 17**



ELEVATOR
Kitchen / Break
out areas **P. 21**



Independet Monitor
Agile Spaces /
Training rooms **P. 11**



Independent Workplace
Agile Spaces /
Training rooms **P. 11**
Silent Booth **P. 18**



iotspot
Desk sharing **P. 7**
Meeting rooms **P. 15**
Silent Booth **P. 18**



POWER FRAME COVER
Meeting rooms **P. 15**
Silent Booth **P. 18**



PRIMO 2
AgilesSpaces /
Training rooms **P. 11**



STEP
Desk sharing **P. 7**



TOP FRAME
Meeting rooms **P. 15**

PRODUCT LIST



TWIST 1 + 2

Kitchen / Break
out areas **P. 21**



Custom Modul USB A/C Charger

Desk sharing **P. 7**
Kitchen / Break
out areas **P. 21**



USB-C 60 W Charger

Meetings rooms **P. 15**



**Integrated USB
charger**

Home office **P. 23**

ZG1 Monitor Arm

- Desk sharing **P. 7**
- Touchdown space **P. 8**
- Home office **P. 23**



ZGX Crossbar

Desk sharing **P. 7**

NOTES

[illegible]

BACH MANN

We power your life.

Uw Bachmann-partner in België / Votre partenaire Bachmann en Belgique:



 **Vander Elst**

Oostvaardijk 42
1850 Grimbergen
 +32 02 242 79 59

 info@vanderelst.be
 www.vanderelst.be